



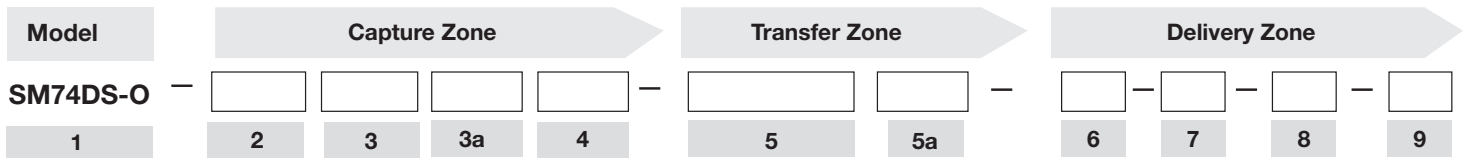
Model: Solatube SkyVault Series (29 in./740 mm Daylighting System)

Project: _____

Location: _____

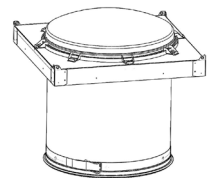
Type: _____

Product Specifications Appear in CSI Division 08, Section 08 62 23. For budgeting and quotations use only. Qty: _____



1 Model

Solatube® M74 DS Solatube M74 DS (29 in./740 mm Daylighting System)
Open Ceiling



Capture Zone

2 Collector (Leave blank if not desired)

C Collector with Raybender HD and LightTracker Technologies



3 Domes

DP Polycarbonate Dome

DPP Polycarbonate Outer Dome + PETG Inner Dome



3a Dome Options (Leave blank if not desired)

SG Security Guard*



*Factory Installed

4 Flashings

FC Curb Cap
*Dome edge protection band included with the dome



C12** Metal Insulated Curb
35 in. x 35 in. x 12 in.
(889 mm x 889 mm x 305 mm)



C16** Metal Insulated Curb
35 in. x 35 in. x 16 in.
(889 mm x 889 mm x 406.5 mm)



C14** Metal Insulated Curb
35 in. x 35 in. x 14 in.
(889 mm x 889 mm x 355.5 mm)



C20** Metal Insulated Curb
35 in. x 35 in. x 20 in.
(889 mm x 889 mm x 508 mm)



CXX** Metal Insulated Curb
35 in. x 35 in. x (XX in.)
(889 mm x 889 mm x (XX mm))
XX: Custom curb height determined by bidding contractor



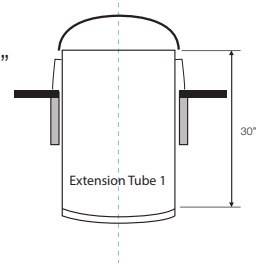
** Curbs designed for single-ply roofing, lightweight fill or tapered insulation low slope roof types.

Transfer Zone

5 Extension Tubes Required*

Run measured from top of flashing to diffuser along centerline of tubing using 24" lengths. See 5a for optional 48" length.

- E1** One Extension Tube – Max Run = ~30"
- E2** Two Extension Tubes – Max Run = ~53"
- E3** Three Extension Tubes – Max Run = ~76"
- E4** Four Extension Tubes – Max Run = ~99"
- E5** Five Extension Tubes – Max Run = ~122"
- E6** Six Extension Tubes – Max Run = ~145"
- E7** Seven Extension Tubes – Max Run = ~168"
- E8** Eight Extension Tubes – Max Run = ~191"
- E9** Nine Extension Tubes – Max Run = ~214"
- E10** Ten Extension Tubes – Max Run = ~237"
- EXX** Total Run Length to be Determined by Bidding Contractor



5a Extension Tube Options (Leave blank if not desired)

*At least one 24" or 48" extension tube required for diffuser

- EL** Optional 48" Extension Tube (Substitute one 48" for two 24" above)
- R** Trim Ring
- TIP** Thermal Insulation Panel and Nominal 24" Extension Tube (2 x 12" transition tubes*)
*2 x 12" transition tubes replace 1 x 24" extension tube.



Delivery Zone

6 Options (Leave blank if not desired)

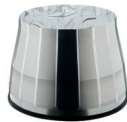
- D1** 0-10v Daylight Dimmer and Nominal 24" Extension Tube (2 x 12" transition tubes*)
*2 x 12" transition tubes replace 1 x 24" extension tube.

7 Bottom Assembly

- B** Base Unit



- A** Amplifier*



*The Amplifier mounts to the bottom extension tube, adding an additional 23.7" to the overall tube run.

8 Diffuser Lens

- L2** Prismatic Diffuser



9 Measurement Standard

- M** Metric **I** Imperial

Accessories (Optional. Order separately)

*transformer for 0-10V Dimmer

- S1** Low voltage 0-10V switch (white) required to operate Solatube 0-10V Daylight Dimmers. Only one switch is required per forty-eight (48) synchronously controlled dimmers. (For 'D1' only) Note: For use when no controls have been specified and customer is looking for an off-the-shelf solution. If different controls have been specified please source those from others.

TR20 UL Listed Class 2 Transformer 24 VAC, Rated 20 VA

TR96 UL Listed Class 2 Transformer 24 VAC, Rated 96 VA

Example

SM74DS-O-DPP-FC-E2-B-L2-M

Solatube® SkyVault Series M74DS-O (29 in./740 mm Daylighting System), Polycarbonate Outer Dome + PETG Inner Dome, Two Extension Tubes, Base Unit and Prismatic® Diffuser. For metric installations.